

PUMPERS LEGEND SERIES



SPARTANERV.COM



LEGEND SERIES PUMPER

Affordable. PURCHASE

We cut the cost...not the quality! Through a design for manufacturing approach of engineered bodies, options, and minimized build hours the Legend Series provides you with a low cost and quick delivery solution.

Functional. DESIGN

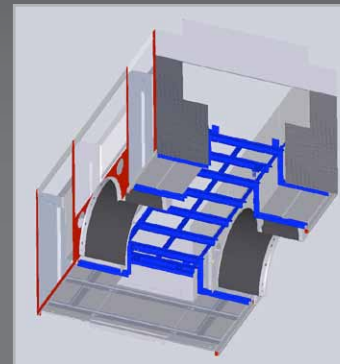
The Legend Series is designed using the latest computer-aided fabrication and assembly technologies that allow you to stack or arrange the modules to create a variety of custom solutions.

Practical. STORAGE

Smart storage made simple. Enclosed full-depth storage above the wheel wells and body configurations with a greater full-depth capacity increase the amount of usable storage space in your compartments.



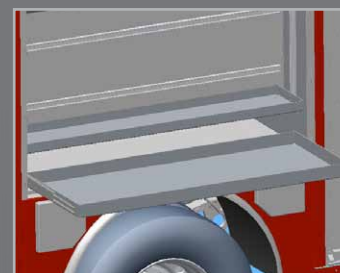
FEATURES



Stainless Steel Subframe with Stainless Steel "Huck Bolt" Fasteners



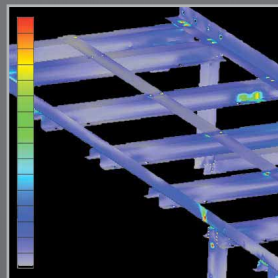
One (1) 26" w x 8" h x 25" d Drawer & Four (4) SCBA / Extinguisher Modules or (2) Four (4) SCBA for a Total of 8



Two (2) 26" w x 8" h x 25" d Drawers or One (1) 64" w x 8" h x 25" d Drawer



Large rear-center compartments for fans, rescue tools, booster reels, etc.



Advanced Finite Element Analysis (FEA) allows us to test our apparatus for strength, performance, and monitoring the stress points for material efficiency. FEA helps to maintain our highly specific manufacturing standards.



The Legend Series features Spartan's exclusive **Vibra-Torq Body Mount System**. This innovation reduces vibration and stress to give you an extremely durable body. Vibra-Torq has a lifetime warranty.



33" high of full-depth usable compartment space on split-depth body configurations



Dual Arm Ladder Rack



CONFIGURATIONS STANDARD & OPTIONAL

CHASSIS

- International 2 dr & 4 dr
- Freightliner 2 dr & 4 dr
- Spartan Force
- Spartan Metro Star
- Spartan Gladiator

BODY

- Twelve (12) Driver's Side Compartment Configurations
- Twelve (12) Officer's Side Compartment Configurations
- Full Height/Full Depth Compartmentation
- Full Height/Split Depth Compartmentation
- 33" High Usable Full Depth Compartmentation on all split depth body configurations
- Three (3) Ladder Storage Configurations
- Roll-Up Doors
- 500-1500 Gallon Water Tank Capacity
- NFPA Minimum Cubic Feet of Hosebed
- Overwheel Compartment Simple Storage

BODY CONSTRUCTION

- Aluminum or Stainless Steel Construction
- Stainless Steel Sub Frame
- Zolatone or Speedliner Compartment Finishes

PUMP SYSTEM

- Darley, Hale, or Waterous
- 1250 gpm Pump (1500 gpm optional)
- Side or Top Control Pump Panel
- CAFS and Foam (optional)
- 10" Rear Newton Dump (optional)
- Booster Reel (optional)
- Front Suction (optional)
- Additional Discharges (optional)
- Front Discharge (bumper)

ELECTRICAL SYSTEM

- NFPA Compliant LED Warning Light Package
- Hydraulic Generator with 110 Volt Electrical Package (optional)
- Gas Generator with 110 Volt Electrical Package (optional)
- 12 Volt Telescoping Light Package (optional)

BASE MODEL DIMENSIONS

Overall Compartment Dimensions

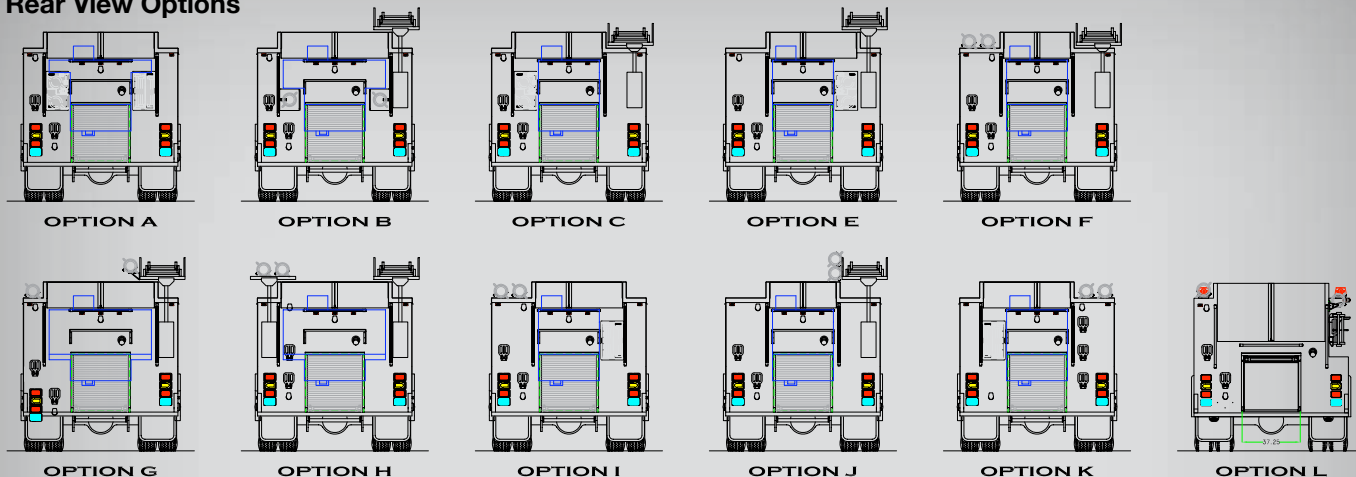
L1 and L3	L2	B1 (rear)
28.5" deep (lower)	28.5" deep (lower)	35.5" deep
15" deep (upper)	15" deep (upper)	39.5" high
72" high	47" high	

Typical Use Compartment Dimensions

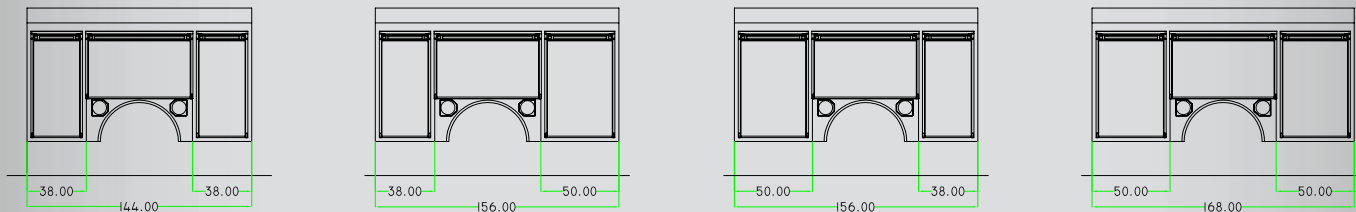
L1 and L3	L2	B1 (rear)
26" deep (lower)	25.5" deep (lower)	33.5" deep
12.5" deep (upper)	12.5" deep (upper)	39.5" high
72" high	47" high	

LEGEND SERIES CONFIGURATIONS

Rear View Options



Driver Side View Options



Officer Side Low Side View Options



* Not all pump modules, body configurations, and ladder storage options are compatible.



SPARTANERV.COM

Phone: 605.582.4000



907 7th Avenue North
Brandon, SD 57005

64 Cocalico Creek Road
Ephrata, PA 17522

725 SW 46th Ave
Ocala, FL 34474